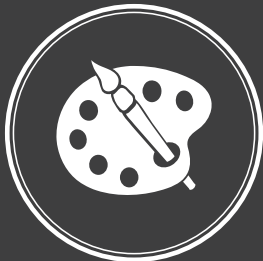


ROWALID[®]-MF

Polymer specific multifunctional masterbatches

+ FUNCTIONAL



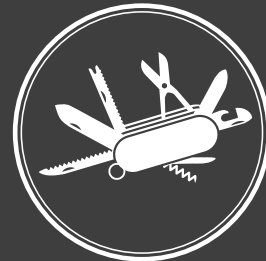
Color



Combinable properties



Additives



Multifunctional

+ INDIVIDUAL



Application specific



By arrangement

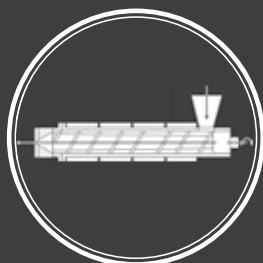


Polymer specific

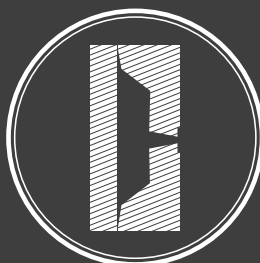


Conformity

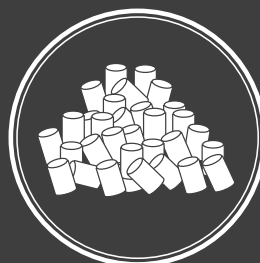
+ VERSATILE



Extrusion



Injection molding



Compounds



Cast film

ROWALID®-MF

Polymer specific multifunctional masterbatches



MULTIFUNCTIONAL

With **ROWALID®-MF**, ROWA Masterbatch combines color and function in combination masterbatches. The products are multifunctional.

There are no limits to the diversity and meeting nearly all customer requirements is possible. For example, RAL colorants can be combined with additives for laser marking, fluorescent colorants with antistatic agents, metal effect colorants with plagiarism protection, and infrared-reflecting colorants with lubricants. This modular system of color and function can be used to achieve your individual specification profile.



CUSTOMIZED

There is nothing off-the-shelf at ROWA Masterbatch. It is possible to find solutions for almost every thermoplastic resin. The advantages of polymer specific masterbatches are:

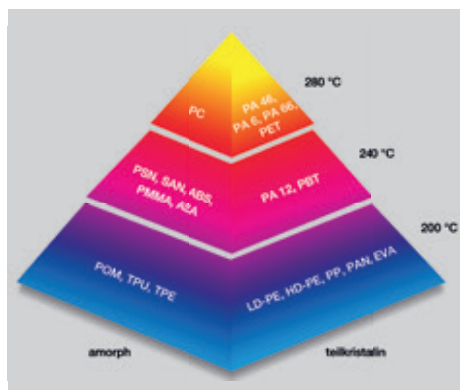
- » optimum design of the technical properties
- » no incompatibilities
- » high resistances

The colorants are selected to match the application, such as

- » Automotive
- » Electronics
- » Construction
- » Consumer

Combined: color & laser markability

Special requirements and conformities, e.g. food contact, use in toys, etc., can be taken into account individually.



Processing temperatures of thermoplastic resins



OPTIMALLY IMPLEMENTED

ROWALID®-MF Masterbatches are optimized for the intended processing method, e.g.:

- » Extrusion
- » Compounding
- » Injection molding
- » Film extrusion